

Edito riale



Freddo. Cupo. Minaccioso. La visione fantascientifica più agghiacciante dell'alieno concepito dal regista Ridley Scott, nella sua stessa evoluzione rilasciata da una saga che ha delineato un genere cinematografico. La battaglia concepita nella sua stessa essenza, tra bene e male, tra Uomo e Mistero. Quello più indefinito rilasciato da ciò che nasce dalle nostre stesse paure, per la prima volta identificate dall'eroe androgino incarnato nella stessa donna che partorirà la sua stessa creatura aliena, Ripley. Un essere spietato, assassino, mosso dal suo stesso istinto omicida. La ripetitività dei suoi stessi personaggi, nell'evoluzione stilistica di un genere, determina quel continuo rinnovamento del mistero della vita e del cosmo. Quello più ancestrale, onirico, sospeso tra paura e speranza. Ciò che nasce dal nostro stesso patrimonio genetico, in quella idealizzata demonizzazione del mistero della vita nello spazio profondo.

Paolo Arfelli

fon**TYPE**
MAGAZINE

Aperiodico di Tipografia Digitale

FontTYPE MAGAZINE è una pubblicazione aperiodica non soggetta a registrazione
ex. art. 5 Legge 8 febbraio 1948, n. 47

Stampato in digitale e pubblicato online in Ravenna nell'anno 2024

presso Alphabet & Type® di Paolo Arfelli

Via Delfino, 21

Punta Marina Terme 48122

vannucci@alphabtype.eu

Grafica, impaginazione e Webmaster:

Paolo Arfelli

Open Source Desktop Publishing:

Scribus

Stampa copie cartacee:

4Graph

Consulenza Legale Editoriale:

Studio Garamond

Alien League

Script: Occidentale

6 point

ABCDEFGHIJKLMN OPSTUVWXYZABCDEFGHIJKLMN OPSTUVWXYZ1234567890

8 point

ABCDEFGHIJKLMN OPSTUVWXYZABCDEFGHIJKLMN OPSTUVWXYZ1234567890

10 point

ABCDEFGHIJKLMN OPSTUVWXYZABCDEFGHIJKLMN OPSTUVWXYZ123456

12 point

ABCDEFGHIJKLMN OPSTUVWXYZABCDEFGHIJKLMN OPSTUV

14 point

ABCDEFGHIJKLMN OPSTUVWXYZABCDEFGHIJKLMN

18 point

ABCDEFGHIJKLMN OPSTUVWXYZABCDEFGHI

24 point

ABCDEFGHIJKLMN OPSTUVX¹

30 point

ABCDEFGHIJKLMN OPRS

36 point

ABCDEFGHIJKLMNO

42 point

ABCDEFGHIJKLM

48 point

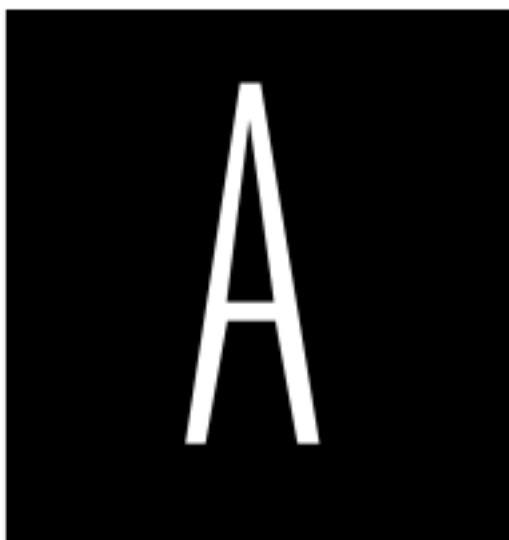
ABCDEFGHIJKL

60 point

ABCDEFGHI,

72 point

ABCDEFGHI



6 point

YOU CAN START WINDOWS-BASED PROGRAMS FROM A COMMAND PROMPT BY TYPING THE NAME OF THE PROGRAM YOU WANT TO RUN, INCLUDING PARAMETERS. FOR EXAMPLE, TO START NOTEPAD, TYPE "NOTEPAD" AT THE COMMAND PROMPT, AND THEN PRESS ENTER. YOU CAN ALSO START WINDOWS-BASED PROGRAMS IN BATCH FILES.

8 point

YOU CAN START WINDOWS-BASED PROGRAMS FROM A COMMAND PROMPT BY TYPING THE NAME OF THE PROGRAM YOU WANT TO RUN, INCLUDING PARAMETERS. FOR EXAMPLE, TO START NOTEPAD, TYPE "NOTEPAD" AT THE COMMAND PROMPT, AND THEN PRESS ENTER. YOU CAN ALSO START WINDOWS-BASED PROGRAMS IN BATCH FILES.

10 point

YOU CAN START WINDOWS-BASED PROGRAMS FROM A COMMAND PROMPT BY TYPING THE NAME OF THE PROGRAM YOU WANT TO RUN, INCLUDING PARAMETERS.

FOR EXAMPLE, TO START NOTEPAD, TYPE "NOTEPAD" AT THE COMMAND PROMPT, AND THEN PRESS ENTER. YOU CAN ALSO START WINDOWS-BASED PROGRAMS IN BATCH FILES.

12 point

YOU CAN START WINDOWS-BASED PROGRAMS FROM A COMMAND PROMPT BY TYPING THE NAME OF THE PROGRAM YOU WANT TO RUN, INCLUDING PARAMETERS.

FOR EXAMPLE, TO START NOTEPAD, TYPE "NOTEPAD" AT THE COMMAND PROMPT, AND THEN PRESS ENTER. YOU CAN ALSO START WINDOWS-BASED PROGRAMS IN BATCH FILES.

Alien Beasts

Script: Occidentale

6 point

A B C D E F G H I J K L M N O P Q R S T U V W X Y Z

8 point

A B C D E F G H I J K L M N O P Q R S T U V W X Y Z

10 point

A B C D E F G H I J K L M N O P Q R S T U V W X Y Z

12 point

A B C D E F G H I J K L M N O P Q R S T U V W X Y Z

14 point

A B C D E F G H I J K L M N O P Q R S T U V W X Y Z

18 point

A B C D E F G H I J K L M N O P Q R S T U V W X Y Z

24 point

A B C D E F G H I J K L M N O P Q R S T U V W X Y Z

30 point

A B C D E F G H I J K L M N O P Q R S T U V W X Y Z

36 point

A B C D E F G H I J K L M N O P Q R S T U V W X Y Z

42 point

A B C D E F G H I J K L M N O P Q R S T U V W X Y Z

48 point

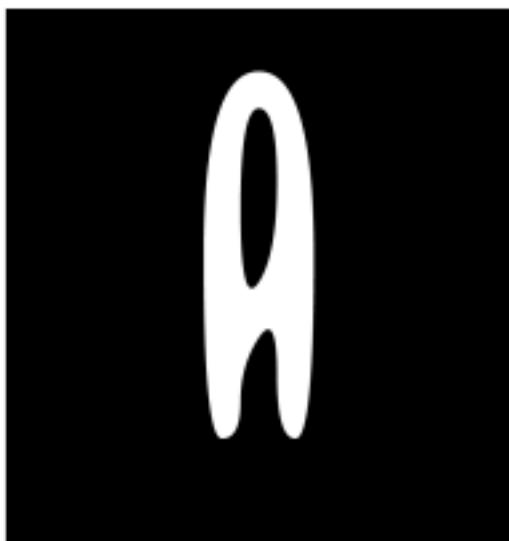
A B C D E F G H I J K L M N O P Q R S T U V W X Y Z

60 point

A B C D E F G H I J K L M N O P Q R S T

72 point

A B C D E F G H I J K L M N O P



6 point

YOU CAN START WINDOWS-BASED PROGRAMS FROM A COMMAND PROMPT BY TYPING THE NAME OF THE PROGRAM YOU WANT TO RUN, INCLUDING PARAMETERS. FOR EXAMPLE, TO START NOTEPAD, TYPE "NOTEPAD" AT THE COMMAND PROMPT, AND THEN PRESS ENTER. YOU CAN ALSO START WINDOWS-BASED PROGRAMS IN BATCH FILES.

8 point

YOU CAN START WINDOWS-BASED PROGRAMS FROM A COMMAND PROMPT BY TYPING THE NAME OF THE PROGRAM YOU WANT TO RUN, INCLUDING PARAMETERS. FOR EXAMPLE, TO START NOTEPAD, TYPE "NOTEPAD" AT THE COMMAND PROMPT, AND THEN PRESS ENTER. YOU CAN ALSO START WINDOWS-BASED PROGRAMS IN BATCH FILES.

10 point

YOU CAN START WINDOWS-BASED PROGRAMS FROM A COMMAND PROMPT BY TYPING THE NAME OF THE PROGRAM YOU WANT TO RUN, INCLUDING PARAMETERS. FOR EXAMPLE, TO START NOTEPAD, TYPE "NOTEPAD" AT THE COMMAND PROMPT, AND THEN PRESS ENTER. YOU CAN ALSO START WINDOWS-BASED PROGRAMS IN BATCH FILES.

12 point

YOU CAN START WINDOWS-BASED PROGRAMS FROM A COMMAND PROMPT BY TYPING THE NAME OF THE PROGRAM YOU WANT TO RUN, INCLUDING PARAMETERS. FOR EXAMPLE, TO START NOTEPAD, TYPE "NOTEPAD" AT THE COMMAND PROMPT, AND THEN PRESS ENTER. YOU CAN ALSO START WINDOWS-BASED PROGRAMS IN BATCH FILES.

Alien League Regular

Script:

6 point

ABCDEFGHIJKLMN OPQRSTUVWXYZ ABCDEFGHIJKLMN OPQRSTUVWXYZ

8 point

ABCDEFGHIJKLMN OPQRSTUVWXYZ ABCDEFGHIJKLMN OPQRSTUVWXYZ

10 point

ABCDEFGHIJKLMN OPQRSTUVWXYZ ABCDEFGHIJKLMN OPQRSTUVWXYZ

12 point

ABCDEFGHIJKLMN OPQRSTUVWXYZ ABCDEFGHIJKLMN OPQRSTUVWXYZ

14 point

ABCDEFGHIJKLMN OPQRSTUVWXYZ ABCDEFGHIJKLMN

18 point

ABCDEFGHIJKLMN OPQRSTUVWXYZ ABCDEF

24 point

ABCDEFGHIJKLMN OPQRSTUVWXYZ

30 point

ABCDEFGHIJKLMN OP RS

36 point

ABCDEFGHIJKLMNO

42 point

ABCDEFGHIJKLM

48 point

ABCDEFGHIJKL

60 point

ABCDEFGHI, |

72 point

ABCDEFGHI G †



6 point

YOU CAN START WINDOWS-BASED PROGRAMS FROM A COMMAND PROMPT BY TYPING THE NAME OF THE PROGRAM YOU WANT TO RUN, INCLUDING PARAMETERS. FOR EXAMPLE, TO START NOTEPAD, TYPE "NOTEPAD" AT THE COMMAND PROMPT, AND THEN PRESS ENTER. YOU CAN ALSO START WINDOWS-BASED PROGRAMS IN BATCH FILES.

8 point

YOU CAN START WINDOWS-BASED PROGRAMS FROM A COMMAND PROMPT BY TYPING THE NAME OF THE PROGRAM YOU WANT TO RUN, INCLUDING PARAMETERS. FOR EXAMPLE, TO START NOTEPAD, TYPE "NOTEPAD" AT THE COMMAND PROMPT, AND THEN PRESS ENTER. YOU CAN ALSO START WINDOWS-BASED PROGRAMS IN BATCH FILES.

10 point

YOU CAN START WINDOWS-BASED PROGRAMS FROM A COMMAND PROMPT BY TYPING THE NAME OF THE PROGRAM YOU WANT TO RUN, INCLUDING PARAMETERS.

FOR EXAMPLE, TO START NOTEPAD, TYPE "NOTEPAD" AT THE COMMAND PROMPT, AND THEN PRESS ENTER. YOU CAN ALSO START WINDOWS-BASED PROGRAMS IN BATCH FILES.

12 point

YOU CAN START WINDOWS-BASED PROGRAMS FROM A COMMAND PROMPT BY TYPING THE NAME OF THE PROGRAM YOU WANT TO RUN, INCLUDING PARAMETERS.

FOR EXAMPLE, TO START NOTEPAD, TYPE "NOTEPAD" AT THE COMMAND PROMPT, AND THEN PRESS ENTER. YOU CAN ALSO START WINDOWS-BASED PROGRAMS IN BATCH FILES.

Alien Planet

Script: Occidentale

6 point

ABCDEFGHIJKLMNOPQRSTUVWXYZabcdefghijklmnopqrstuvwxyz

8 point

ABCDEFGHIJKLMNOPQRSTUVWXYZabcdefghijklmnopqrstuvwxyz

10 point

ABCDEFGHIJKLMNOPQRSTUVWXYZabcdefghijklmnopqrstuvwxyz

12 point

ABCDEFGHIJKLMNOPQRSTUVWXYZabcdefghijklmnopqrstuvwxyz

14 point

ABCDEFGHIJKLMNOPQRSTUVWXYZabcdefghijklmnopqrstuvwxyz

16 point

ABCDEFGHIJKLMNOPQRSTUVWXYZabcdefghijklmnopqrstuvwxyz

24 point

ABCDEFGHIJKLMNOPQRSTUVWXYZ

30 point

ABCDEFGHIJKLMNOPQRSTUVWXYZ

36 point

ABCDEFGHIJKLMNOPQRSTUVWXYZ

42 point

ABCDEFGHIJKLMNO

48 point

ABCDEFGHIJKLM

60 point

ABCDEFGHIJK

72 point

ABCDEFGHI



6 point

YOU CAN START WINDOWS-BASED PROGRAMS FROM A COMMAND PROMPT BY TYPING THE NAME OF THE PROGRAM YOU WANT TO RUN, INCLUDING PARAMETERS. FOR EXAMPLE, TO START NOTEPAD, TYPE "NOTEPAD" AT THE COMMAND PROMPT AND THEN PRESS ENTER. YOU CAN ALSO START WINDOWS-BASED PROGRAMS IN BATCH FILES.

8 point

YOU CAN START WINDOWS-BASED PROGRAMS FROM A COMMAND PROMPT BY TYPING THE NAME OF THE PROGRAM YOU WANT TO RUN, INCLUDING PARAMETERS. FOR EXAMPLE, TO START NOTEPAD, TYPE "NOTEPAD" AT THE COMMAND PROMPT AND THEN PRESS ENTER. YOU CAN ALSO START WINDOWS-BASED PROGRAMS IN BATCH FILES.

10 point

YOU CAN START WINDOWS-BASED PROGRAMS FROM A COMMAND PROMPT BY TYPING THE NAME OF THE PROGRAM YOU WANT TO RUN, INCLUDING PARAMETERS. FOR EXAMPLE, TO START NOTEPAD, TYPE "NOTEPAD" AT THE COMMAND PROMPT AND THEN PRESS ENTER. YOU CAN ALSO START WINDOWS-BASED PROGRAMS IN BATCH FILES.

12 point

YOU CAN START WINDOWS-BASED PROGRAMS FROM A COMMAND PROMPT BY TYPING THE NAME OF THE PROGRAM YOU WANT TO RUN, INCLUDING PARAMETERS. FOR EXAMPLE, TO START NOTEPAD, TYPE "NOTEPAD" AT THE COMMAND PROMPT AND THEN PRESS ENTER. YOU CAN ALSO START WINDOWS-BASED PROGRAMS IN BATCH FILES.

Alien Resurrection

Script: Occidentale

6 point

ABCDEFGHIJKL MNOPRSTUV XY ZABCDEFGHIJ

8 point

ABCDEFGHIJKL MNOPRSTUV XY ZABCDEFGHIJ

10 point

ABCDEFGHIJKL MNOPRSTUV

12 point

ABCDEFGHIJKL MNOPR

14 point

ABCDEFGHIJKL MN

18 point

ABCDEFGHIJKL

24 point

ABCDEFGHI

30 point

ABCDEFGHI

36 point

ABCDEFGHI

42 point

ABCDEFGHI

48 point

ABCDEFGHI

60 point

ABCDEFGHI

72 point

ABCDEFGHI



6 point

YOU CAN START WINDOWS-BASED PROGRAMS FROM A COMMAND PROMPT BY TYPING THE NAME OF THE PROGRAM YOU WANT TO RUN, INCLUDING PARAMETERS. FOR EXAMPLE, TO START

8 point

YOU CAN START WINDOWS-BASED PROGRAMS FROM A COMMAND PROMPT BY TYPING THE NAME OF THE PROGRAM YOU WANT TO

10 point

YOU CAN START WINDOWS-BASED PROGRAMS FROM A COMMAND PROMPT BY TYPING THE NAME OF THE PROGRAM

12 point

YOU CAN START WINDOWS-BASED PROGRAMS FROM A COMMAND PROMPT BY TYPING THE

Faltura Alien

Script: Occidentale

6 point

A B C D E F G H I J K L M N O P Q R S T U V X Y Z [\] ^ _ ` { | } ~

8 point

A B C D E F G H I J K L M N O P Q R S T U V X Y Z [\] ^ _ ` { | } ~

10 point

A B C D E F G H I J K L M N O P Q R S T U V X Y Z [\] ^ _ ` { | } ~

12 point

A B C D E F G H I J K L M N O P Q R S T U V X Y Z [\] ^ _ ` { | } ~

14 point

A B C D E F G H I J K L M N O P Q R S T U V X Y Z [\] ^ _ ` { | } ~

16 point

A B C D E F G H I J K L M N O P Q R S T U V X Y Z [\] ^ _ ` { | } ~

24 point

A B C D E F G H I J K L M N O P Q R S T U V X

30 point

A B C D E F G H I J K L M N O P Q R S

36 point

A B C D E F G H I J K L M N O

42 point

A B C D E F G H I J K L M

48 point

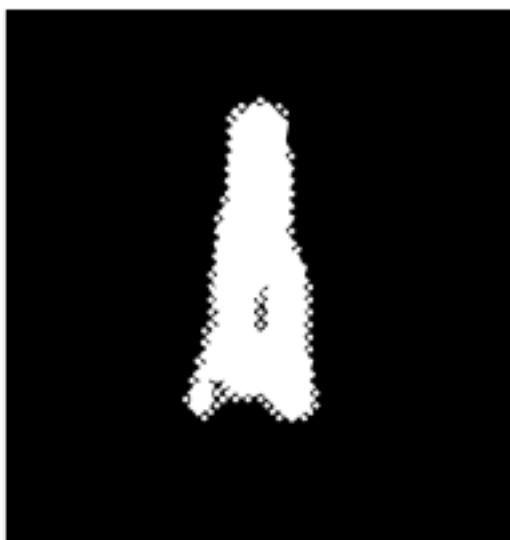
A B C D E F G H I J K L

60 point

A B C D E F G H I

72 point

A B C D E F G H



6 point

YOU CAN START WINDOWS-BASED PROGRAMS FROM A COMMAND PROMPT BY TYPING THE NAME OF THE PROGRAM YOU WANT TO RUN, INCLUDING PARAMETERS. FOR EXAMPLE, TO START NOTEPAD, TYPE "NOTEPAD" AT THE COMMAND PROMPT, AND THEN PRESS ENTER. YOU CAN ALSO START WINDOWS-BASED PROGRAMS IN BATCH FILES.

8 point

YOU CAN START WINDOWS-BASED PROGRAMS FROM A COMMAND PROMPT BY TYPING THE NAME OF THE PROGRAM YOU WANT TO RUN, INCLUDING PARAMETERS. FOR EXAMPLE, TO START NOTEPAD, TYPE "NOTEPAD" AT THE COMMAND PROMPT, AND THEN PRESS ENTER. YOU CAN ALSO

10 point

YOU CAN START WINDOWS-BASED PROGRAMS FROM A COMMAND PROMPT BY TYPING THE NAME OF THE PROGRAM YOU WANT TO RUN, INCLUDING PARAMETERS.

FOR EXAMPLE, TO START NOTEPAD, TYPE "NOTEPAD" AT THE COMMAND PROMPT, AND THEN

12 point

YOU CAN START WINDOWS-BASED PROGRAMS FROM A COMMAND PROMPT BY TYPING THE NAME OF THE PROGRAM YOU WANT TO RUN, INCLUDING PARAMETERS. FOR EXAMPLE, TO START NOTEPAD, TYPE "NOTEPAD" AT THE COMMAND PROMPT.

Forever After

Script: Occidentale

6 point

ABCDEF GHIJ KLMNOPRSTUVWXYZ ABCDEF GHIJ KLMNOPRSTUVWXYZ 1234567890

8 point

ABCDEF GHIJ KLMNOPRSTUVWXYZ ABCDEF GHIJ KLMNOPRSTUVWXYZ

10 point

ABCDEF GHIJ KLMNOPRSTUVWXYZ ABCDEF GHIJ KLMNOI

12 point

ABCDEF GHIJ KLMNOPRSTUVWXYZ ABCDEF GHI

14 point

ABCDEF GHIJ KLMNOPRSTUVWXYZ ABCI

18 point

ABCDEF GHIJ KLMNOPRSTUVX

24 point

ABCDEF GHIJ KLMNOPI

30 point

ABCDEF GHIJ KLM

36 point

ABCDEF GHIJK

42 point

ABCDEF GHI

48 point

ABCDEF GH

60 point

ABCDEF

72 point

ABCDEI



6 point

YOU CAN START WINDOWS-BASED PROGRAMS FROM A COMMAND PROMPT BY TYPING THE NAME OF THE PROGRAM YOU WANT TO RUN, INCLUDING PARAMETERS. FOR EXAMPLE, TO START NOTEPAD, TYPE "NOTEPAD" AT THE COMMAND PROMPT, AND THEN PRESS ENTER. YOU CAN ALSO START WINDOWS-BASED PROGRAMS IN BATCH FILES.

8 point

YOU CAN START WINDOWS-BASED PROGRAMS FROM A COMMAND PROMPT BY TYPING THE NAME OF THE PROGRAM YOU WANT TO RUN, INCLUDING PARAMETERS. FOR EXAMPLE, TO START NOTEPAD, TYPE "NOTEPAD" AT THE COMMAND PROMPT, AND THEN PRESS ENTER. YOU CAN ALSO START WINDOWS-BASED PROGRAMS IN BATCH FILES.

10 point

YOU CAN START WINDOWS-BASED PROGRAMS FROM A COMMAND PROMPT BY TYPING THE NAME OF THE PROGRAM YOU WANT TO RUN, INCLUDING PARAMETERS. FOR EXAMPLE, TO START NOTEPAD, TYPE "NOTEPAD" AT THE COMMAND PROMPT, AND THEN PRESS ENTER. YOU CAN ALSO START

12 point

YOU CAN START WINDOWS-BASED PROGRAMS FROM A COMMAND PROMPT BY TYPING THE NAME OF THE PROGRAM YOU WANT TO RUN, INCLUDING PARAMETERS. FOR EXAMPLE, TO START NOTEPAD, TYPE "NOTEPAD" AT THE COMMAND PROMPT, AND THEN PRESS ENTER. YOU CAN

Martian Wars

Script: Occidentale

6 point

ABCDEF GHIJ KLMNOPRSTUVW XYZ ABCDEF GHIJ KLMNOPRSTUVW XYZ ABCDEF

8 point

ABCDEF GHIJ KLMNOPRSTUVW XYZ ABCDEF GHIJ KLMNOPRSTUVW XYZ ABCDEF

10 point

ABCDEF GHIJ KLMNOPRSTUVW XYZ ABCDEF GHIJ KLMNOPRSTUVW XYZ

12 point

ABCDEF GHIJ KLMNOPRSTUVW XYZ ABCDEF GHIJ KLMNOP

14 point

ABCDEF GHIJ KLMNOPRSTUVW XYZ ABCDEF GHIJ

18 point

ABCDEF GHIJ KLMNOPRSTUVW XYZ ABC

24 point

ABCDEF GHIJ KLMNOPRSTUV

30 point

ABCDEF GHIJ KLMNOP

36 point

ABCDEF GHIJ KLM

42 point

ABCDEF GHIJKL

48 point

ABCDEF GHIJ

60 point

ABCDEF GH

72 point

ABCDEF



6 point

YOU CAN START WINDOWS-BASED PROGRAMS FROM A COMMAND PROMPT BY TYPING THE NAME OF THE PROGRAM YOU WANT TO RUN, INCLUDING PARAMETERS. FOR EXAMPLE, TO START NOTEPAD, TYPE "NOTEPAD" AT THE COMMAND PROMPT, AND THEN PRESS ENTER. YOU CAN ALSO START WINDOWS-BASED PROGRAMS IN BATCH FILES.

8 point

YOU CAN START WINDOWS-BASED PROGRAMS FROM A COMMAND PROMPT BY TYPING THE NAME OF THE PROGRAM YOU WANT TO RUN, INCLUDING PARAMETERS. FOR EXAMPLE, TO START NOTEPAD, TYPE "NOTEPAD" AT THE COMMAND PROMPT, AND THEN PRESS ENTER. YOU CAN ALSO START WINDOWS-BASED PROGRAMS IN BATCH FILES.

10 point

YOU CAN START WINDOWS-BASED PROGRAMS FROM A COMMAND PROMPT BY TYPING THE NAME OF THE PROGRAM YOU WANT TO RUN, INCLUDING PARAMETERS. FOR EXAMPLE, TO START NOTEPAD, TYPE "NOTEPAD" AT THE COMMAND PROMPT, AND THEN PRESS ENTER. YOU CAN ALSO START WINDOWS-BASED PROGRAMS IN BATCH FILES.

12 point

YOU CAN START WINDOWS-BASED PROGRAMS FROM A COMMAND PROMPT BY TYPING THE NAME OF THE PROGRAM YOU WANT TO RUN, INCLUDING PARAMETERS. FOR EXAMPLE, TO START NOTEPAD, TYPE "NOTEPAD" AT THE COMMAND PROMPT, AND THEN PRESS ENTER. YOU CAN ALSO START WINDOWS-BASED PROGRAMS IN BATCH FILES.

Neon Future 2.0

Script:

6 point

ABCDEFGHIJKLMNOPQRSTUVWXYZabcdefghijklmnopqrstuvwxyz

8 point

ABCDEFGHIJKLMNOPQRSTUVWXYZabcdefghijklmnopqrstuvwxyz

10 point

ABCDEFGHIJKLMNOPQRSTUVWXYZabcdefghijklmnopqrstuvwxyz

12 point

ABCDEFGHIJKLMNOPQRSTUVWXYZabcdefghijklmnopqrstuvwxyz

14 point

ABCDEFGHIJKLMNOPQRSTUVWXYZ

18 point

ABCDEFGHIJKLMNOPQRSTUVWXYZ

24 point

ABCDEFGHIJKLMNOPQRSTUVWXYZ

30 point

ABCDEFGHIJKLMNOPQRSTUVWXYZ

36 point

ABCDEFGHIJKLMNOPQRSTUVWXYZ

42 point

ABCDEFGHIJKLMNOPQRSTUVWXYZ

48 point

ABCDEFGHIJKLMNOPQRSTUVWXYZ

60 point

ABCDEFGHIJKLMNOPQRSTUVWXYZ

72 point

ABCDEFGHIJKLMNOPQRSTUVWXYZ



6 point

You can start Windows®based programs from a command prompt by typing the name of the program you want to run, including parameters. For example, to start Notepad, type notepad at the command prompt and then press ENTER. You can also start Windows®based programs in batch files.

8 point

You can start Windows®based programs from a command prompt by typing the name of the program you want to run, including parameters. For example, to start Notepad, type notepad at the command prompt and

10 point

You can start Windows®based programs from a command prompt by typing the name of the program you want to run, including parameters. For example, to start Notepad, type notepad at the command

12 point

You can start Windows®based programs from a command prompt by typing the name of the program you want to run, including parameters. For example, to start Notepad, type notepad at

Raptors

Script: Occidentale

6 point

ABCDEFGHIJKLMN OPQRSTUVWXYZ ABCDEFGHIJKLMN OPQRSTUVWXYZ

8 point

ABCDEFGHIJKLMN OPQRSTUVWXYZ ABCDEFGHIJKLMN OPQRSTUVWXYZ 1234567890

10 point

ABCDEFGHIJKLMN OPQRSTUVWXYZ ABCDEFGHIJKLMN OPQRSTUVWXYZ 1234567890

12 point

ABCDEFGHIJKLMN OPQRSTUVWXYZ ABCDEFGHIJKLMN OPQRSTUVWXYZ

14 point

ABCDEFGHIJKLMN OPQRSTUVWXYZ ABCDEFGHIJKLMN OP

18 point

ABCDEFGHIJKLMN OPQRSTUVWXYZ ABCDEFGH

24 point

ABCDEFGHIJKLMN OPQRSTUVWXYZ

30 point

ABCDEFGHIJKLMN OP

36 point

ABCDEFGHIJKLMN

42 point

ABCDEFGHIJKLMN

48 point

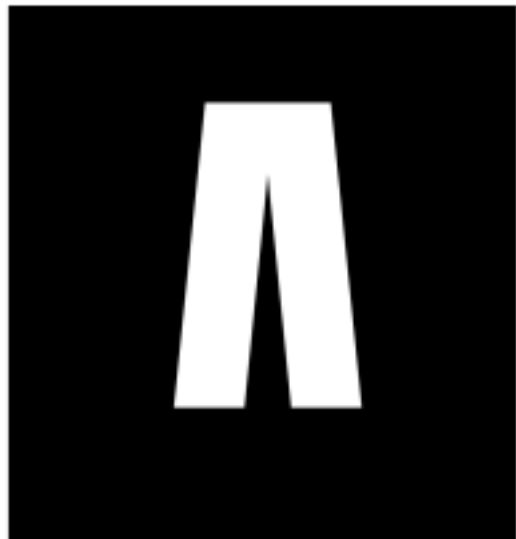
ABCDEFGHIJKLM

60 point

ABCDEFGHIJ

72 point

ABCDEFGH



6 point

YOU CAN START WINDOWS-BASED PROGRAMS FROM A COMMAND PROMPT BY TYPING THE NAME OF THE PROGRAM YOU WANT TO RUN, INCLUDING PARAMETERS. FOR EXAMPLE, TO START NOTEPAD, TYPE "NOTEPAD" AT THE COMMAND PROMPT, AND THEN PRESS ENTER. YOU CAN ALSO START WINDOWS-BASED PROGRAMS IN BATCH FILES.

8 point

YOU CAN START WINDOWS-BASED PROGRAMS FROM A COMMAND PROMPT BY TYPING THE NAME OF THE PROGRAM YOU WANT TO RUN, INCLUDING PARAMETERS. FOR EXAMPLE, TO START NOTEPAD, TYPE "NOTEPAD" AT THE COMMAND PROMPT, AND THEN PRESS ENTER. YOU CAN ALSO START WINDOWS-BASED PROGRAMS IN BATCH FILES.

10 point

YOU CAN START WINDOWS-BASED PROGRAMS FROM A COMMAND PROMPT BY TYPING THE NAME OF THE PROGRAM YOU WANT TO RUN, INCLUDING PARAMETERS. FOR EXAMPLE, TO START NOTEPAD, TYPE "NOTEPAD" AT THE COMMAND PROMPT, AND THEN PRESS ENTER. YOU CAN ALSO START WINDOWS-BASED PROGRAMS IN BATCH FILES.

12 point

YOU CAN START WINDOWS-BASED PROGRAMS FROM A COMMAND PROMPT BY TYPING THE NAME OF THE PROGRAM YOU WANT TO RUN, INCLUDING PARAMETERS. FOR EXAMPLE, TO START NOTEPAD, TYPE "NOTEPAD" AT THE COMMAND PROMPT, AND THEN PRESS ENTER. YOU CAN ALSO START WINDOWS-BASED PROGRAMS IN BATCH FILES.

Shatterdome

Script: Occidentale

6 point

.....

8 point

.....

10 point

.....

12 point

.....

14 point

.....

18 point

.....

24 point

.....

30 point

.....

36 point

.....

42 point

.....

48 point

.....

60 point

.....

72 point

.....



6 point

.....

.....

.....

.....

8 point

.....

.....

.....

.....

.....

.....

.....

10 point

.....

.....

.....

.....

.....

.....

.....

.....

.....

12 point

.....

.....

.....

.....

.....

.....

.....

.....

.....

.....

.....

.....

.....

.....

Speed Freaks

Script: Occidentale

6 point

ABCDEFGHIJKLMN OPQRSTUVWXYZ ABCDEFGHIJKLMN OPQRSTUVWXYZ1234567890

8 point

ABCDEFGHIJKLMN OPQRSTUVWXYZ ABCDEFGHIJKLMN OPQRSTUVWXYZ123

10 point

ABCDEFGHIJKLMN OPQRSTUVWXYZ ABCDEFGHIJKLMN OP

12 point

ABCDEFGHIJKLMN OPQRSTUVWXYZ ABCDEFGHIJ

14 point

ABCDEFGHIJKLMN OPQRSTUVWXYZ ABCD

18 point

ABCDEFGHIJKLMN OPSTUVX

24 point

ABCDEFGHIJKLMN OP

30 point

ABCDEFGHIJKLMN

36 point

ABCDEFGHIJKL

42 point

ABCDEFGHIJ

48 point

ABCDEFGHI

60 point

ABCDEFG

72 point

ABCDE



6 point

YOU CAN START WINDOWS-BASED PROGRAMS FROM A COMMAND PROMPT BY TYPING THE NAME OF THE PROGRAM YOU WANT TO RUN, INCLUDING PARAMETERS.

FOR EXAMPLE, TO START NOTEPAD, TYPE "NOTEPAD" AT THE COMMAND PROMPT, AND THEN PRESS ENTER. YOU CAN ALSO START WINDOWS-BASED PROGRAMS IN BATCH FILES.

8 point

YOU CAN START WINDOWS-BASED PROGRAMS FROM A COMMAND PROMPT BY TYPING THE NAME OF THE PROGRAM YOU WANT TO RUN, INCLUDING PARAMETERS.

FOR EXAMPLE, TO START NOTEPAD, TYPE "NOTEPAD" AT THE COMMAND PROMPT, AND THEN PRESS ENTER. YOU CAN ALSO START

10 point

YOU CAN START WINDOWS-BASED PROGRAMS FROM A COMMAND PROMPT BY TYPING THE NAME OF THE PROGRAM YOU WANT TO RUN, INCLUDING PARAMETERS.

FOR EXAMPLE, TO START NOTEPAD, TYPE "NOTEPAD" AT THE COMMAND PROMPT, AND THEN PRESS ENTER. YOU

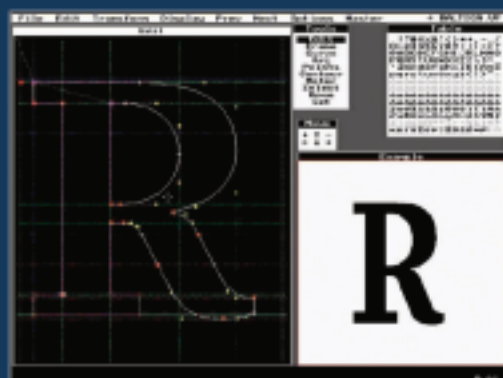
12 point

YOU CAN START WINDOWS-BASED PROGRAMS FROM A COMMAND PROMPT BY TYPING THE NAME OF THE PROGRAM YOU WANT TO RUN, INCLUDING PARAMETERS. FOR EXAMPLE, TO START NOTEPAD, TYPE "NOTEPAD" AT THE COMMAND PROMPT, AND THEN PRESS ENTER. YOU CAN

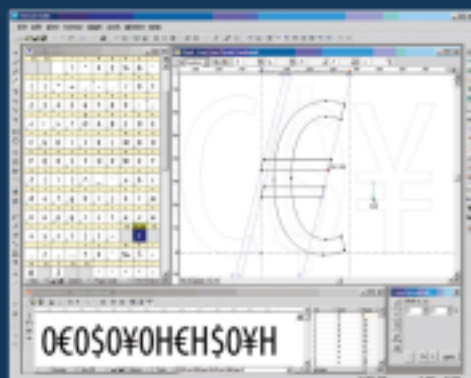
✘ The year 2005 marks an unusual anniversary: 30 years of digital font technology. In 1975, at the ATypI conference in Warsaw, Peter Karow from the Hamburg-based company URW introduced Ikarus, the world's first digital type design system that worked with outline fonts. Ten years later, Adobe created PostScript and the Type 1 font format, which both became standards in publishing. In the early 1990s, Apple introduced the TrueType font format and the Unicode Consortium published the Unicode Standard. Both initiatives laid the foundations for multilingual text processing and were subsequently implemented in Microsoft Windows and Mac OS. The turn of the millennium brought about OpenType, a significant initiative that unified PostScript, TrueType and Unicode, and added a sophisticated system of advanced typographic features.

The development of the digital font technology makes it easier for end-users to do text processing, typesetting and layout without sacrificing the typographic quality and logical correctness of the text. But nothing gets lost in Nature: using fonts is getting easier but developing them is more complex. Apart from just drawing letters, a type designer needs to know about encoding, hinting, layout features and various parameters that need to be set inside of a font.

FontLab is an application that assists the font developer in all that: a digital font editor for Mac and Windows that allows the designer to create professional-level fonts from start to end. In 2005, Fontlab Ltd. releases FontLab Studio 5, a new version of the application. TYPO magazine is the first to publish an overview of this new application, based on a beta version for Windows.



01 Font Designer 1.0, the protoplast of FontLab Studio 5.0 Font Designer 1.0, předchůdce FontLab Studio 5.0



02 Three main elements of the FontLab Studio 5 user interface: the Font Window showing the character set of a font, the Glyph Window for designing the glyph shapes, and the Metrics Window for setting metrics and kerning. Tři hlavní prvky uživatelského rozhraní FontLab Studio 5: okno Font ukazující znakovou sadu písma, okno Glyph sloužící k návrhu vzhledu glyfů a okno Metrics pro nastavení metrik a kerningu.

From Font Designer to FontLab Studio

The history of FontLab starts when the history of Soviet Union ends. With the collapse of the communist system in Central and Eastern Europe in 1989–90, numerous talents from the former “Soviet Bloc” realized the emerging opportunities. SoftUnion, a young Russian company based in St. Petersburg, was looking for a Western partner who would distribute the software products the company was developing. One of the products was a DOS-based font editing application called Font Designer, developed by a team of programmers led by a young engineer Yuri Yarmola. Pyrus North America Ltd., founded in 1992 by an American entrepreneur Ted Harrison, became SoftUnion’s worldwide distributor. In 1993–94, the SoftUnion team developed and Pyrus released FontLab 2.0, quickly followed by version 2.5, as well as ScanFont, a specialized autotracer that converted bitmaps into font glyphs. Despite being Windows-only applications, this set of fast and handy PostScript font tools started gaining popularity among type designers and font developers. In 1995 SoftUnion sold the FontLab product rights to Pyrus and focused on the hardware business. Yuri Yarmola and a team of programmers continued to work on font software, and in 1997, Pyrus released a set of new products: a basic font editor called TypeTool, a professional Asian font tool called FontLab Composer (that later became AsiaFont Studio), and a new version of ScanFont. In 1998, after a complete rewrite, FontLab 3.0 for Windows was released: the first font editor ever that allowed native editing of Type 1 and TrueType fonts, with full Unicode support and

high-quality hinting. FontLab 3.0 for Mac was released a year later and in 2000, new company Fontlab Ltd. was formed to continue development and distribution of the FontLab products. Compared to the last version of the application (4.6), FontLab Studio 5 seems much more than a fresh-up. According to Yuri Yarmola, vice president of Fontlab Ltd. and the company’s lead developer, practically every aspect of the application has been revised. “It was the users who shaped the development of the application. More than 90% of the changes in FontLab Studio 5 are based directly on customer feedback,” says Yarmola. The highlights of FontLab Studio 5 include new metrics and kerning editing, improved proofing and printing, improved Bézier drawing tools, integrated autotracing (formerly only available in ScanFont, a separate product), improved font merging and blending, in-context glyph design, better OpenType support, better autohinting, improved Python scripting support as well as hundreds of other improvements. FontLab Studio 5 is a versatile font editor for all sorts of users. The majority of the large font foundries and many smaller font houses use FontLab for designing new typefaces, creating the final font products, or both. Linguists, historians, publishers, librarians, scholars, educators, software companies, graphic designers and even Greek Orthodox monasteries use FontLab to create new typefaces and to extend, convert, re-encode and otherwise modify existing fonts. If FontLab Studio is “too much” for you, Fontlab Ltd. has simpler and more affordable products such as the basic font editor TypeTool or the universal font converter TransType.

TYPO TOOLS TEXT: ADAM TWARDOCH

FONTLAB STUDIO 5: TYPE DESIGNER'S DELIGHT

